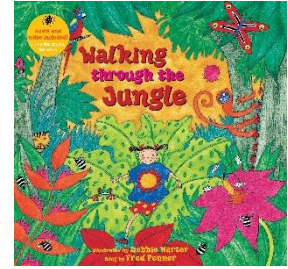


## Spring 1 in Year 1 looks like...



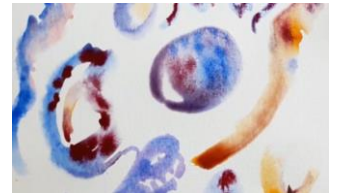
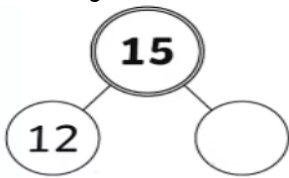
Our topic this half term is '**Amazing Animals**'

**Writing:** We will be using fiction and non-fiction texts linked to our topic of Animals. We will, week by week, be working through the book 'Walking through the Jungle' (so just as with 'Little Polar Bear' please don't read ahead!) where each double page is focused on a different habitat; jungles, oceans and seas, mountains, deserts.

**Phonics** continues to be taught daily as a whole class and we expect that all children are given the opportunity to read and be read to at home. We will be focusing on handwriting, especially letter and number formation. This will be taught as a whole class and will be expected to continue at home.

**Reading:** Children will continue to be given either a physical or e-book from the ELS Phonics Scheme weekly. By now they should be showing increasing independence when reading to an adult. They will be working to develop a variety of strategies to decode text including **meaning:** what the pictures tell us, **structure:** does that sound right (in English) and lastly, **visual:** what the graphemes tell us – using their phonics knowledge. Some readers will begin to cross check sources of information whilst reading to confirm their reading accuracy.

**Maths:** We will be developing our calculation and problem-solving skills with larger numbers to 20. We will continue understanding numbers up to 20, comparing and ordering numbers and knowing addition and subtraction facts. We will also continue looking at odd and even numbers, part-part whole models and measuring.



**Science:** The children will learn to sort animals into different groups – carnivores, herbivores, omnivores and will investigate and identify a variety of common animals including birds, fish, amphibians, reptiles, mammals and invertebrates. We will also be looking at humans and what our amazing bodies can do!

**Art and Design:** We will be experimenting with watercolour paints and then creating different habitats.

**PE:** Indoor PE will be on a Monday and Outdoor PE will be on a Friday for both classes. Outdoor PE will focus on ball skills and indoor PE will focus on gymnastics- building upper body strength. Please continue to leave earrings at home on these days and dress your children in warm outdoor clothing and trainers.

**PSHCE:** As part of our animal topic, we will be naming parts of the human body. We will be naming the private parts of the body and teaching the children the scientific words. This is a legal requirement. We will also teach them to recognise the importance of personal hygiene (washing hands, brushing teeth) and respecting each other's privacy. We recognise that we only teach a small part of this topic at this age- just the scientific words. It is important that parents talk to their children and that home is a place where further discussions should take place.

Half term is **16<sup>th</sup> - 20<sup>th</sup> February.**

## **Spring 1 in Year 1 looks like...**

We are very grateful for all of your support as we work together to help the children progress and develop.  
Please do talk to us about your child's needs.

Yours sincerely,

The Year 1 Team