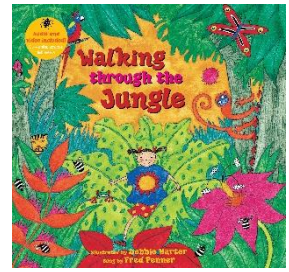


Spring 1 in Year 1 looks like...

Our topic this half term is '**Amazing Animals**'



English

We will be using fiction and non-fiction texts linked to our topic of Animals. We will, week by week, be working through the book 'Walking through the Jungle' (so just as with 'Little Polar Bear' please don't read ahead!) where each double page is focused on a different habitat; jungles, oceans and seas, mountains, deserts.

Phonics continues to be taught daily as a whole class and we expect that all children are given the opportunity to read, and be read to at home. We will begin guided reading sessions where we introduce a picture/book/clip for discussion, followed by reading in small groups.

Reading: Continue to access the ELS EBook Learning Platform where appropriate. Demonstrate increasing independence when reading to an adult appropriate individually levelled texts. Use a variety of strategies to decode text including **meaning:** what the pictures tell us, **structure:** does that sound right (in English) and lastly, **visual:** what the graphemes tell us - using their phonics knowledge. Some readers will begin to cross check sources of information whilst reading to confirm their reading accuracy.

Maths

In Maths we are developing our calculation and problem solving skills. We will continue understanding numbers up to 20, comparing and ordering numbers and knowing addition and subtraction facts. We will also continue looking at odd and even numbers, part-part whole models and measuring.

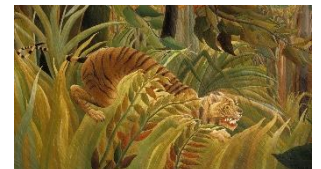


Science

The children will learn to sort animals into different groups - carnivores, herbivores, omnivores and will investigate and identify a variety of common animals including birds, fish, amphibians, reptiles, mammals and invertebrates.

Art and Design

We will be looking at the artist Henri Rousseau and creating our own art inspired by his work. We use different materials to make our own models (e.g. modelling clay, air drying clay, salt dough, Plasticine).



PE

Outdoor PE will be on a Tuesday for 1R and Wednesday for 1MC. Indoor PE will be on a Thursday for both classes. Outdoor PE will focus on ball skills and indoor PE will focus on dance. Please continue to leave earrings at home on these days and dress your children in warm outdoor clothing and trainers.

Half term is **13th-17th February**.

We are very grateful for all of your support as we work together to help the children progress and develop. Please do talk to us about your child's needs.

Yours sincerely,

The Year 1 Team